

CITTA' DI VIZZINI
PROVINCIA DI CATANIA



**PIANO PARTICOLAREGGIATO
DEL CENTRO STORICO**



CENTRO URBANO

ANALISI DEL CONTESTO URBANO



ABACO DELLE ALTERAZIONI

DATA: Dicembre 2009
Revisione:

RAPPORTO: 1:200

TAVOLA

PROGETTISTI:
- prof. arch. Giuseppe Fera -
- dott. arch. Marco Aurelio Sinatra -

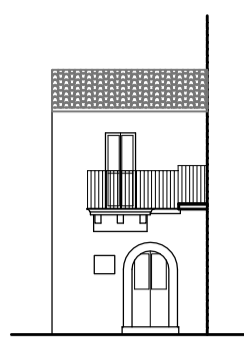
A10

VISTI:

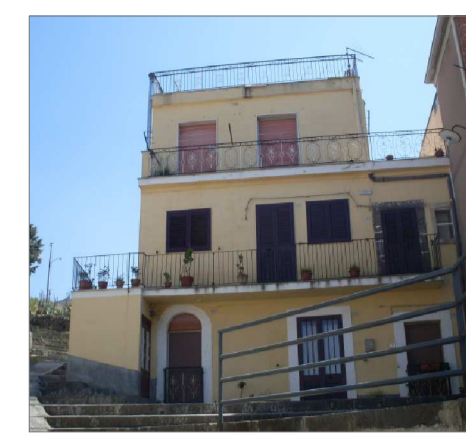
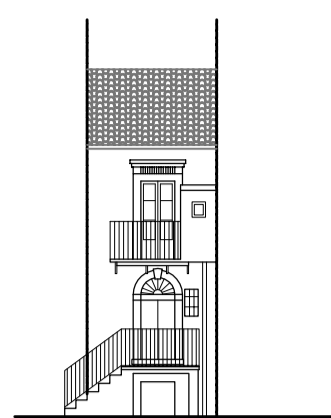
MENSOLE BALCONI



iso213fab2



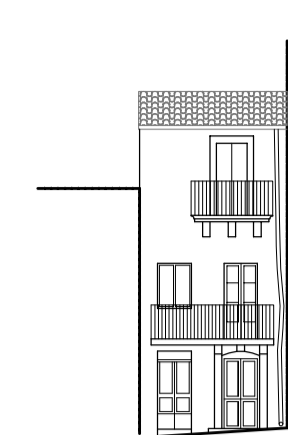
iso218fab7



iso237fab1



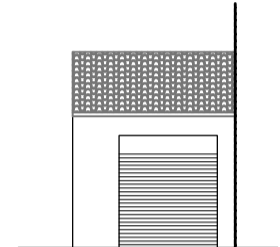
iso228fab26



CATODIO IN GARAGE



iso28fab2



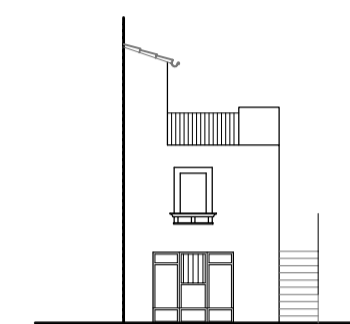
iso1fab1



iso24fab10



iso95fab2



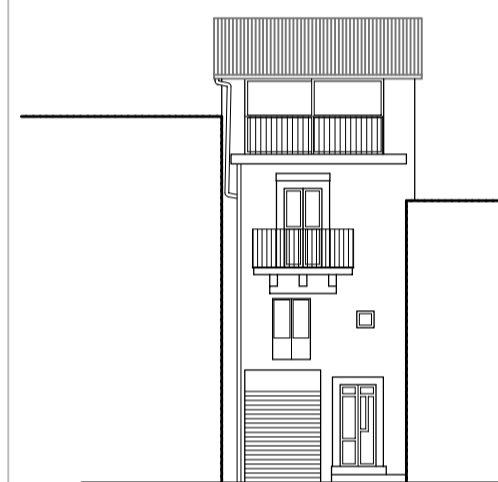
PIANO SOPRAELEVATO



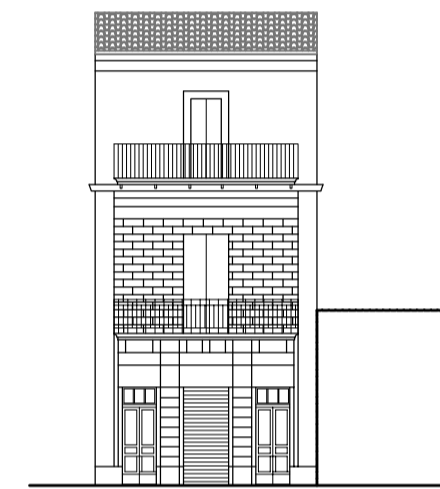
iso38fab1



iso88fab8



iso185fab26



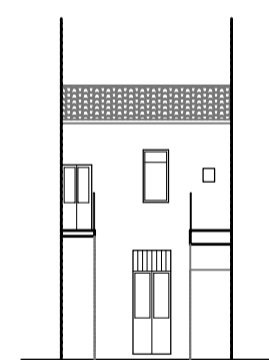
iso192fab18



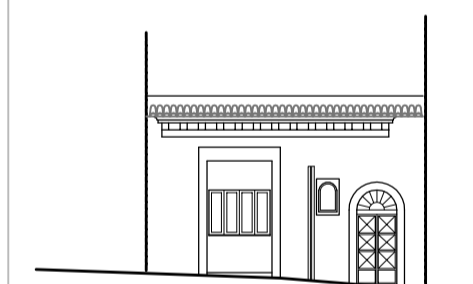
SOSTITUZIONE INFISSI



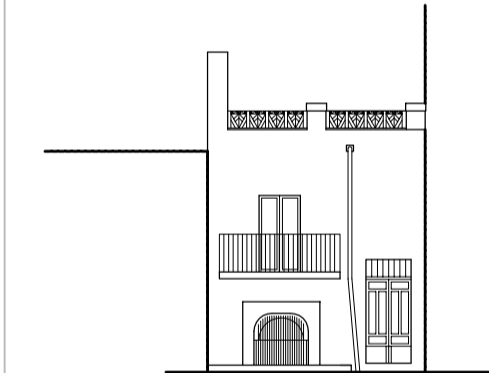
iso42fab4



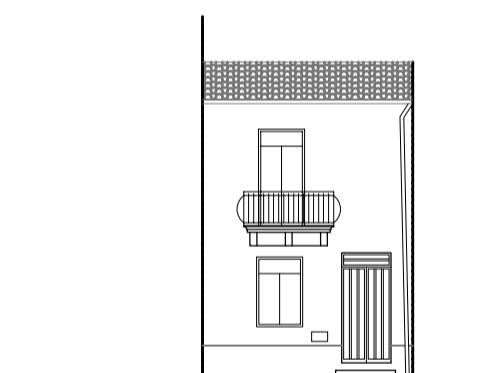
iso125fab2



iso179fab3



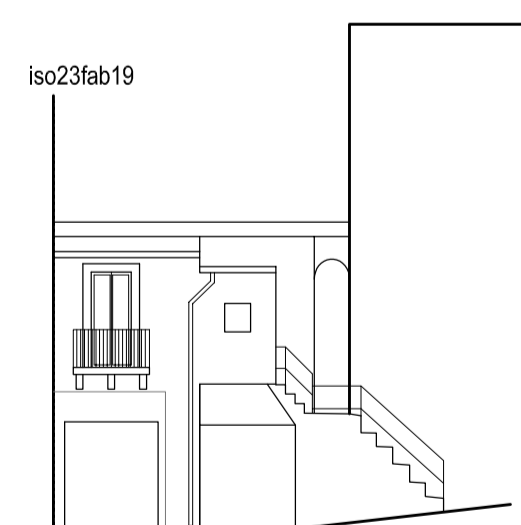
iso240fab7



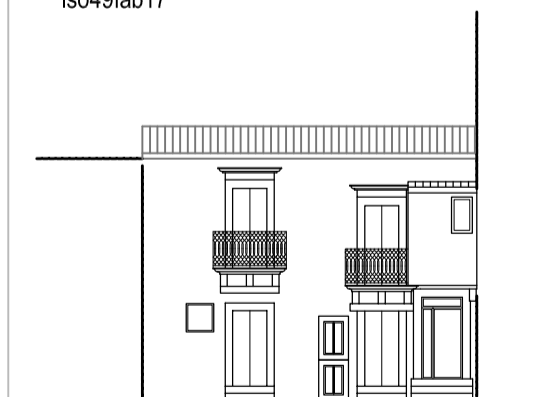
SUPERFETAZIONI



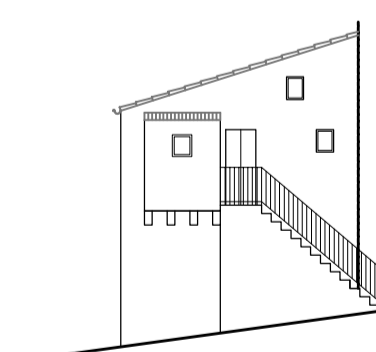
iso23fab19



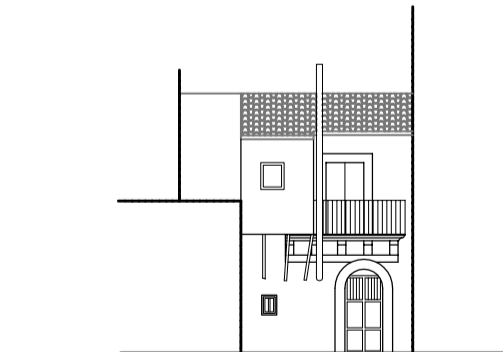
iso49fab17



iso136fab9



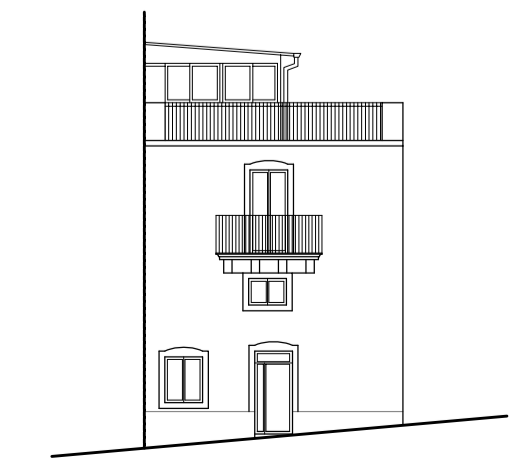
iso206fab25



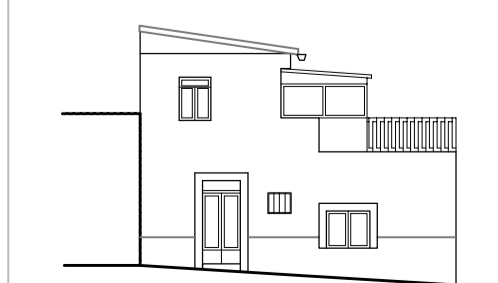
VERANDE - TETTOIE



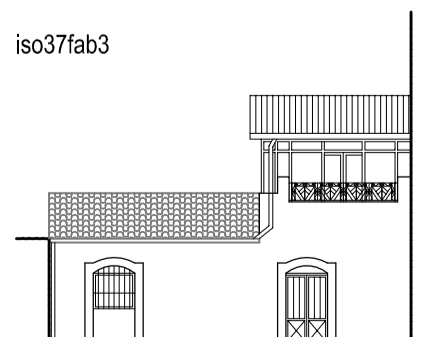
iso233fab14



iso37fab3



iso37fab3



iso121fab9

