



CITTA' DI VIZZINI
PROVINCIA DI CATANIA

PIANO PARTICOLAREGGIATO
DEL CENTRO STORICO



CENTRO URBANO

ANALISI DEL CONTESTO URBANO

PROCESSI EVOLUTIVI DI ALCUNE TIPOLOGIE EDILIZIE MINORI

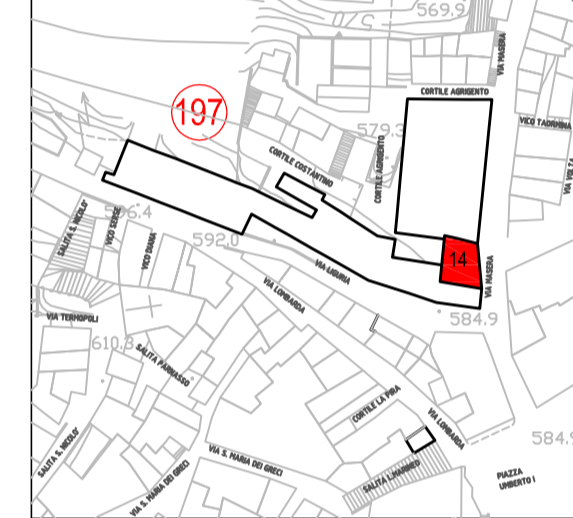
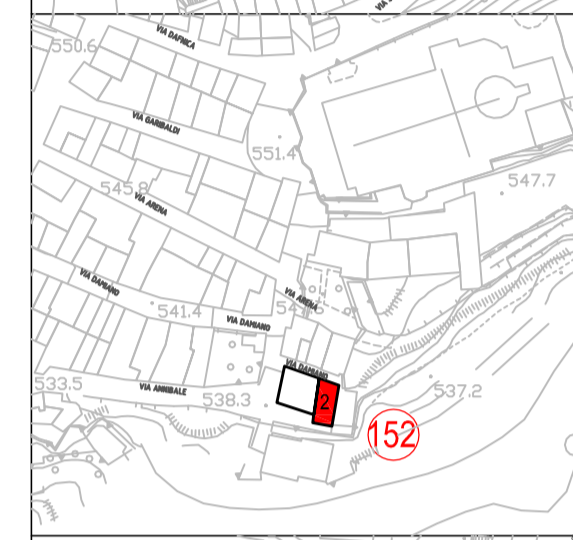
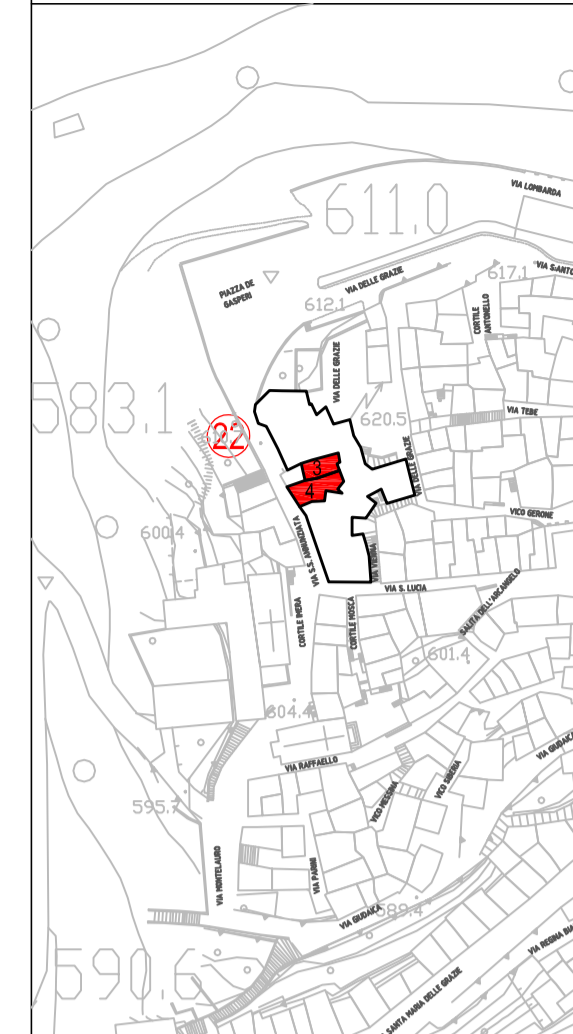
DATA: Dicembre 2009 RAPPORTO: Vario TAVOLA

PROGETTISTI:
- prof. arch. Giuseppe Fera -
- dott. arch. Marco Aurelio Sinatra -

A9d

VISTI:

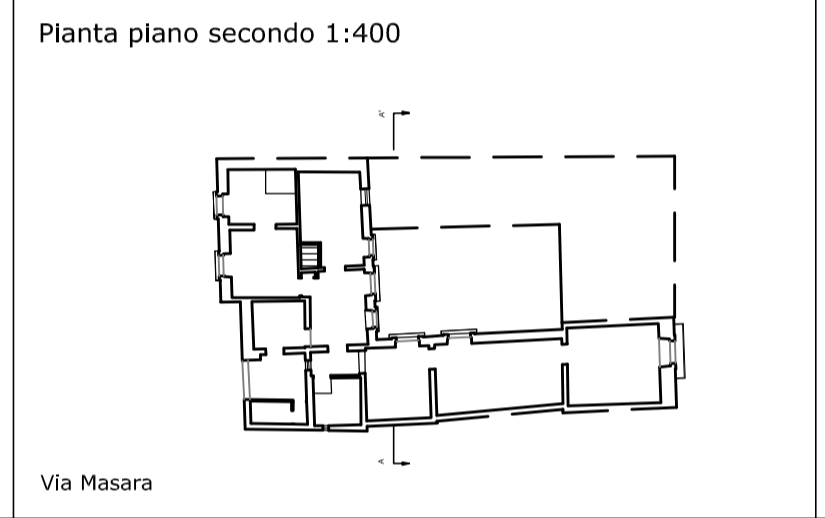
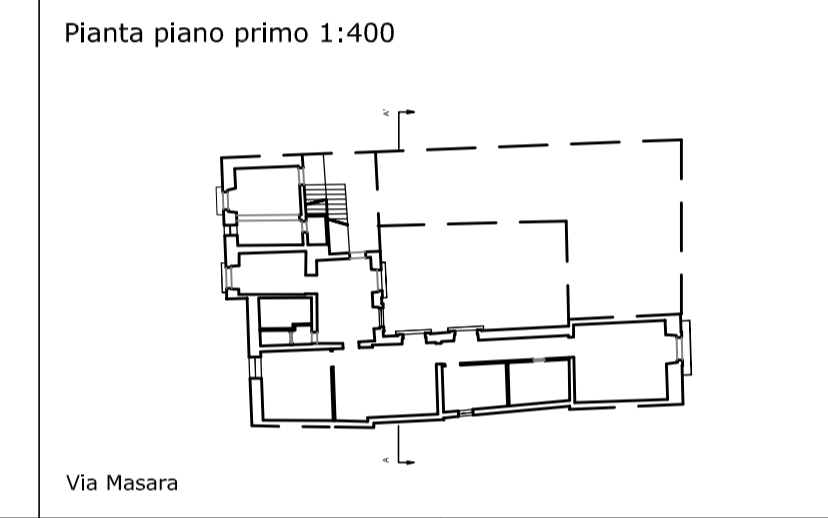
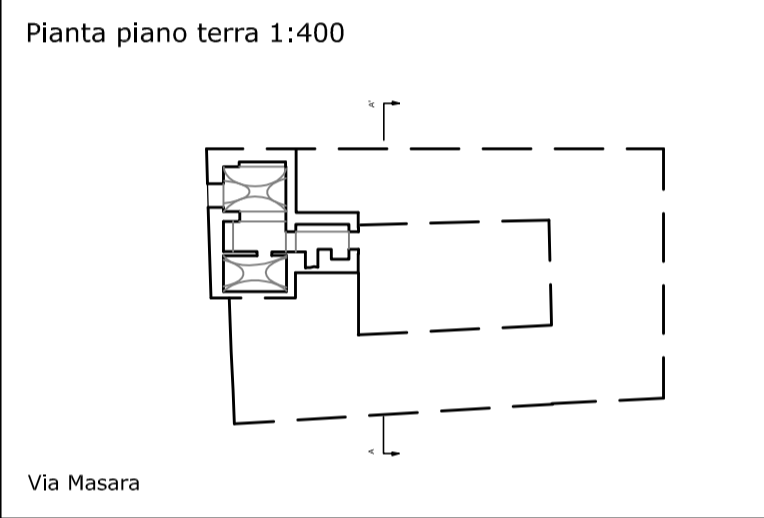
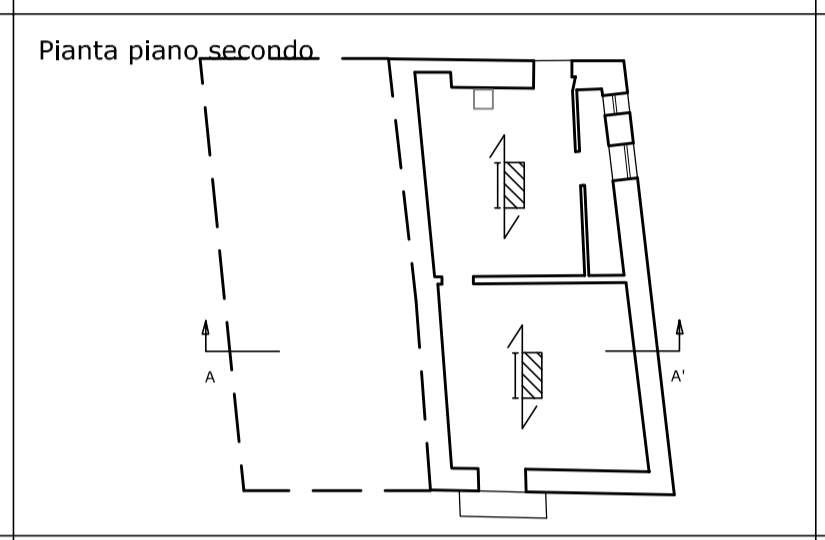
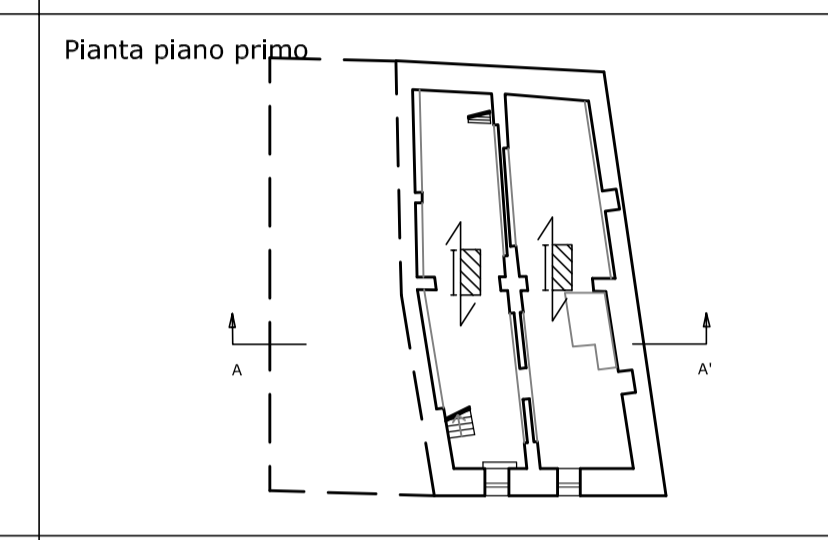
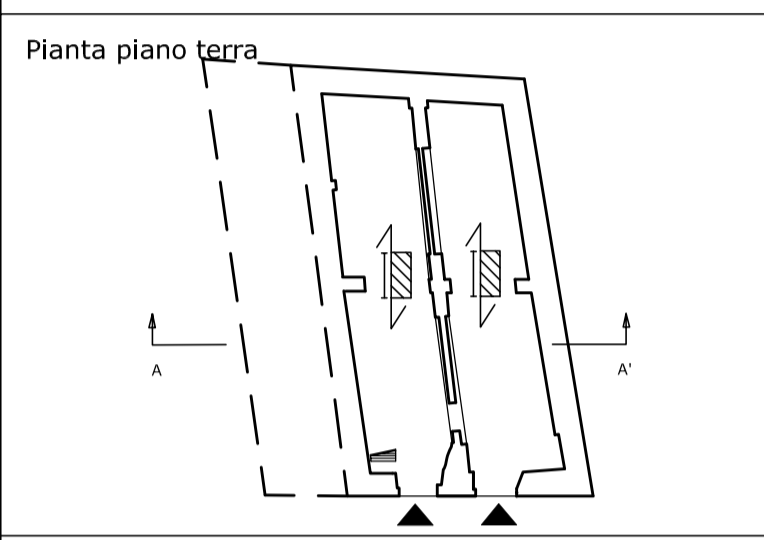
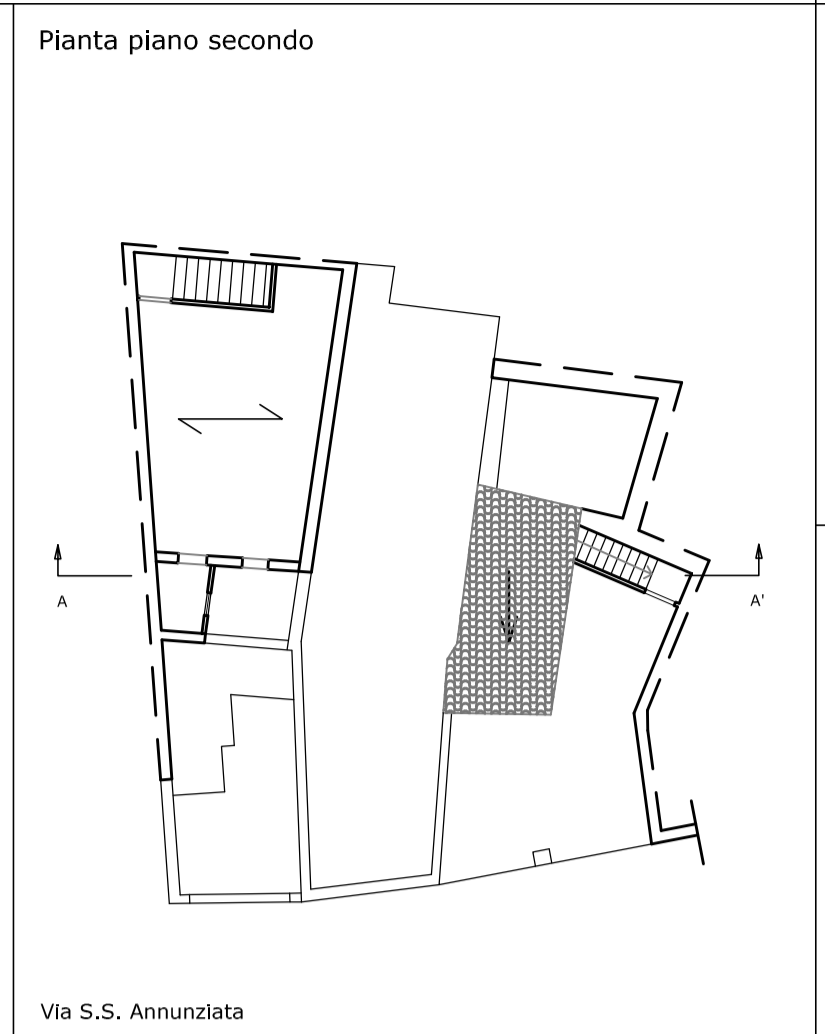
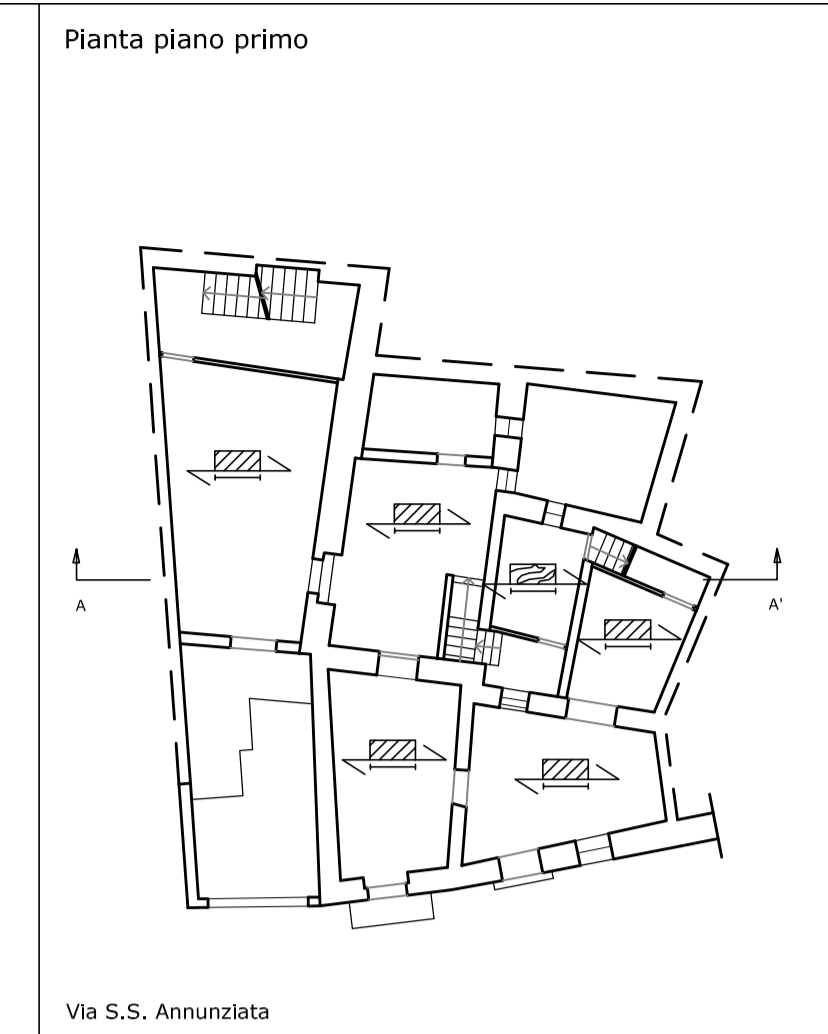
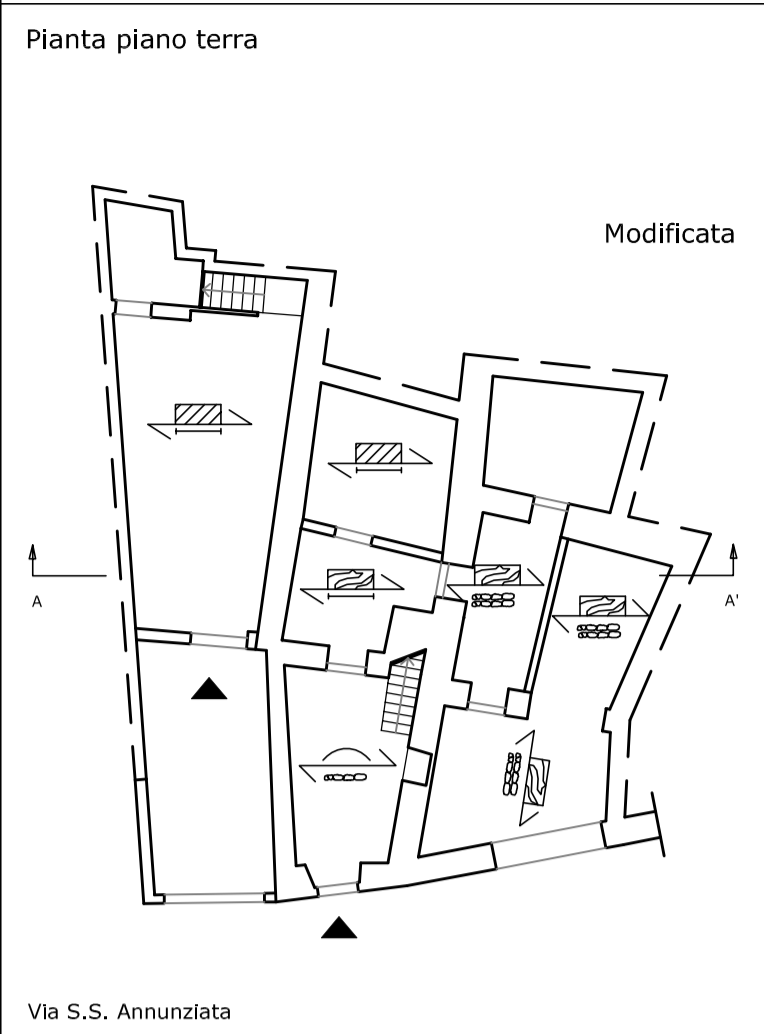
PLANIMETRIA
1:2000



FOTO



PIANTE
1:200



PROSPETTI -SEZIONI
1:100

