

CITTA' DI VIZZINI  
PROVINCIA DI CATANIA



# PIANO PARTICOLAREGGIATO DEL CENTRO STORICO



CENTRO URBANO

## ANALISI DEL CONTESTO URBANO



## PROCESSI EVOLUTIVI DI ALCUNE TIPOLOGIE EDILIZIE MINORI

DATA: Dicembre 2009  
Revisione:

RAPPORTO: Vario

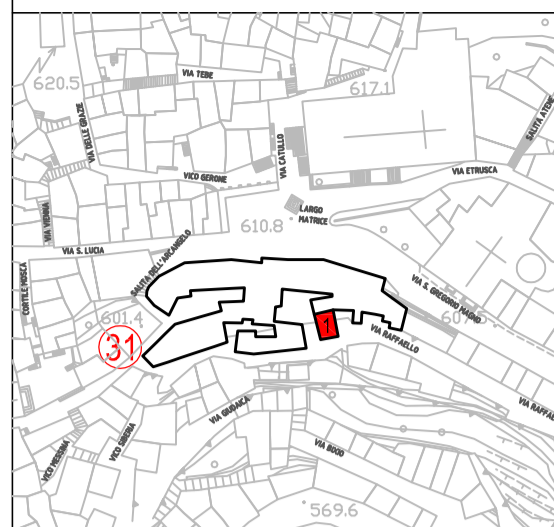
TAVOLA

PROGETTISTI:  
- prof. arch. Giuseppe Fera -  
- dott. arch. Marco Aurelio Sinatra -

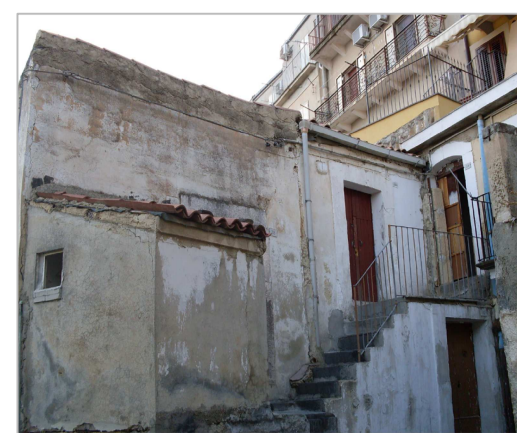
# A9c

VISTI:

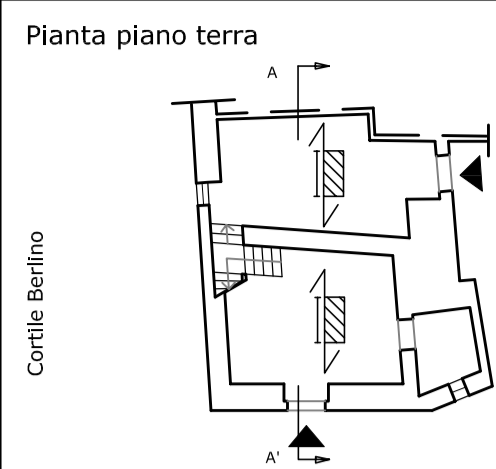
### PLANIMETRIA 1:2000



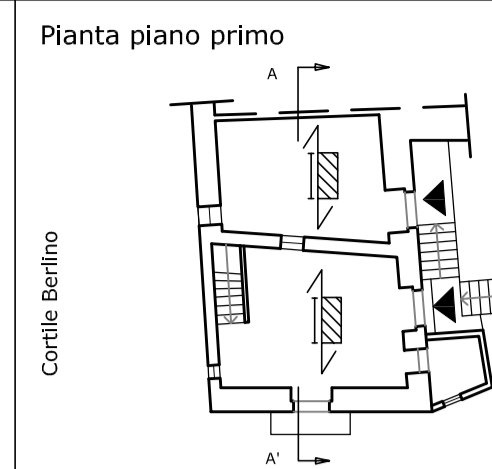
### FOTO



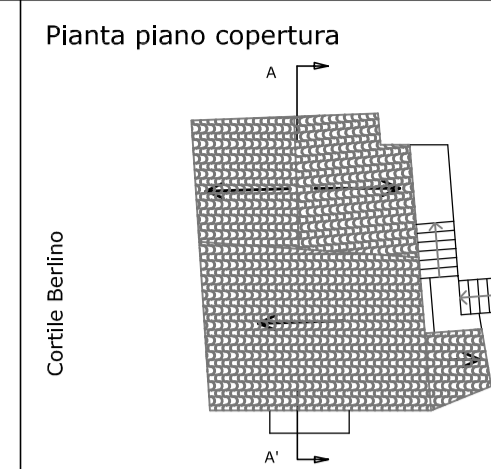
### PIANTE 1:200



Contile Berlino



Via Raffaello



Via Raffaello

### PROSPETTI 1:100

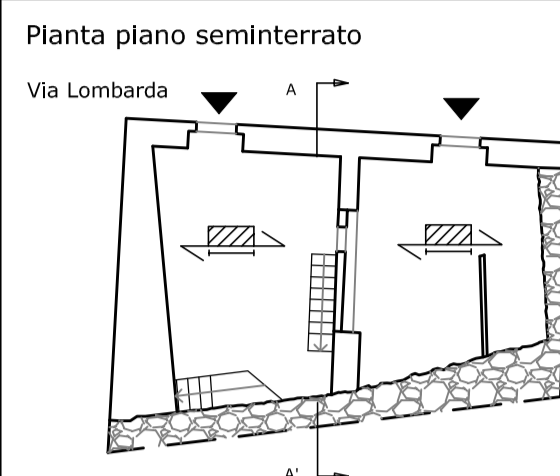
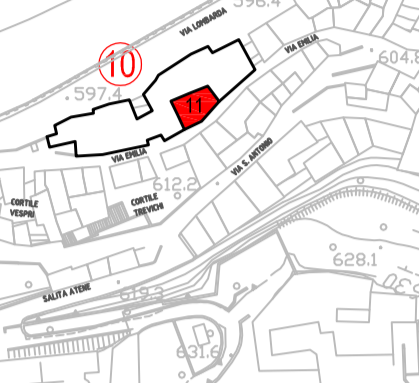
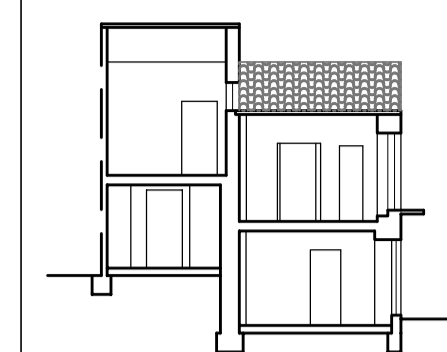
Prospetto su via Raffaello

Prospetto

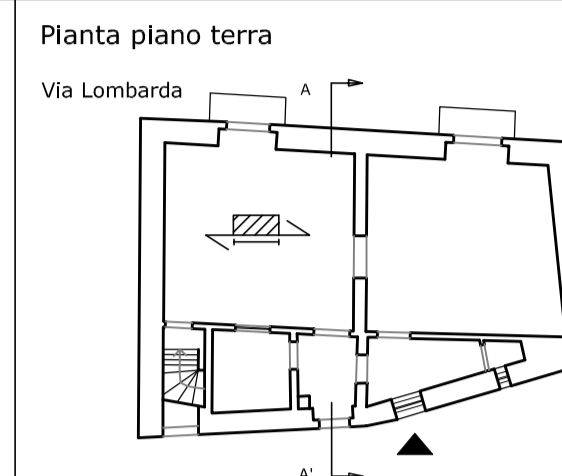


### SEZIONI 1:100

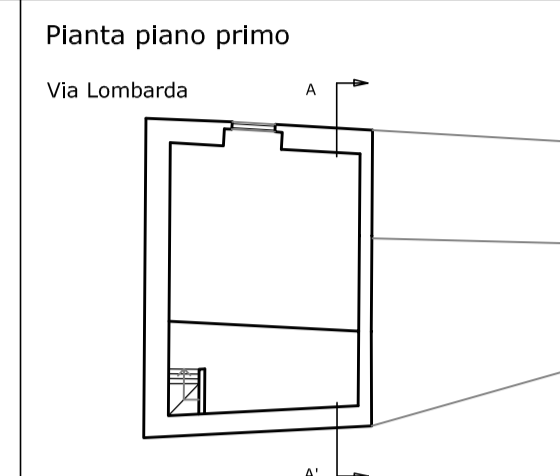
SEZ A-A'



Via Lombarda



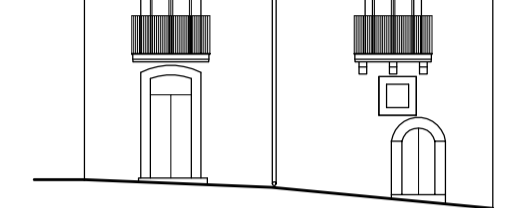
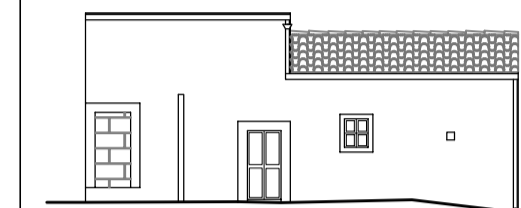
Via Emilia



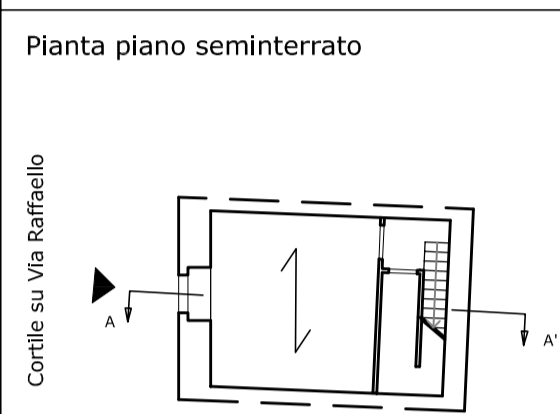
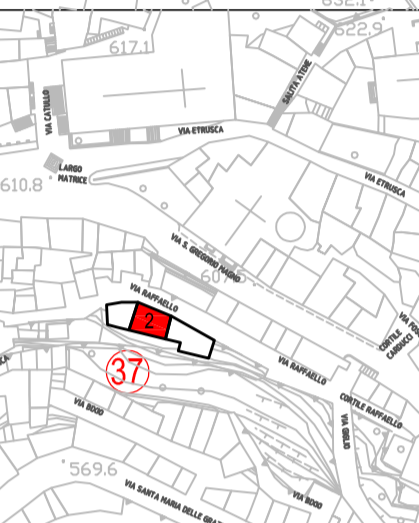
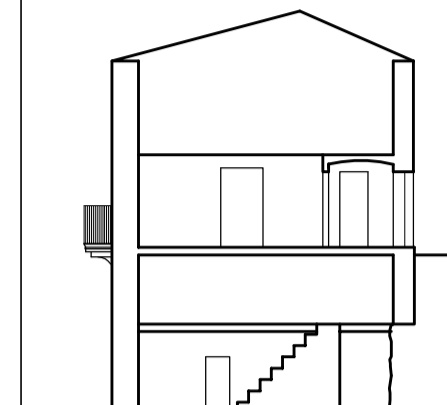
Via Emilia

Prospetto su via Emilia

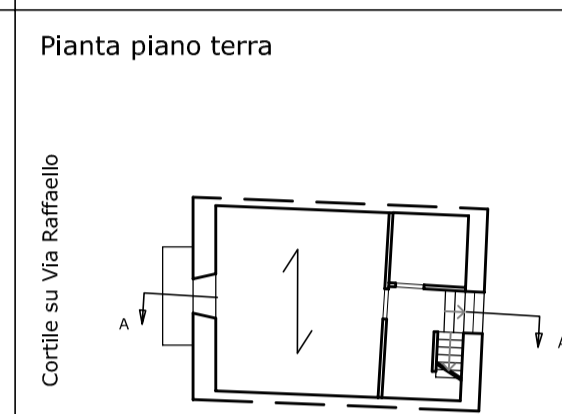
Prospetto su via Lombarda



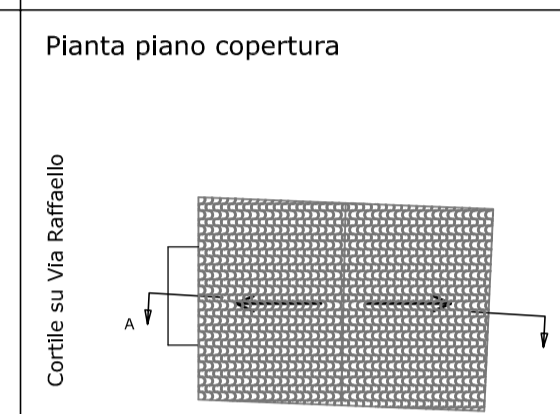
SEZ A-A'



Contile su Via Raffaello



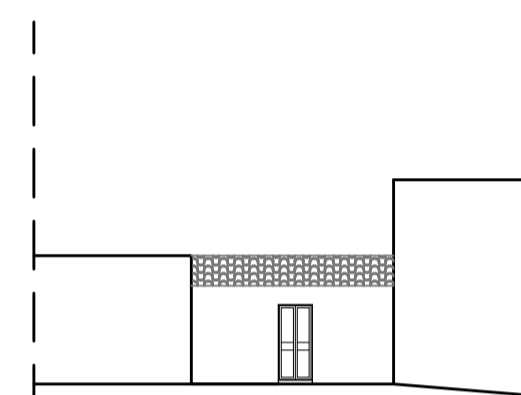
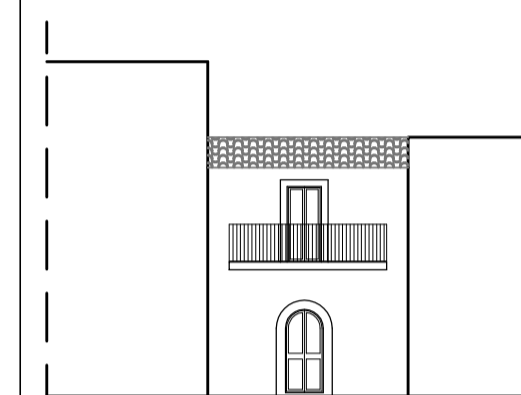
Contile su Via Raffaello



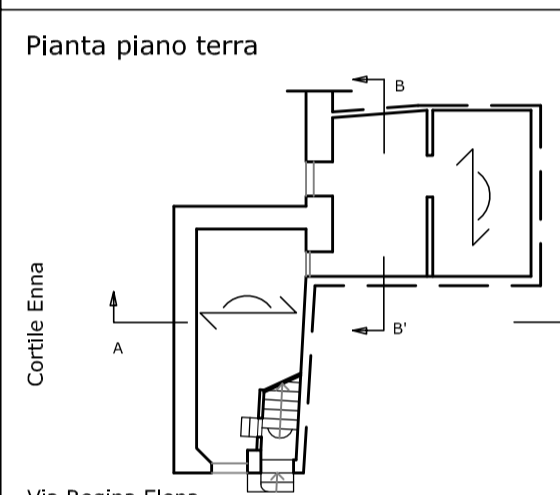
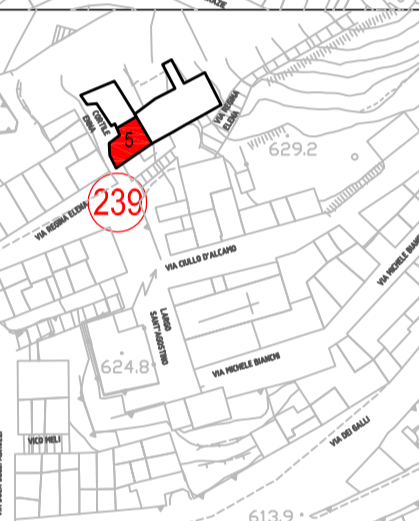
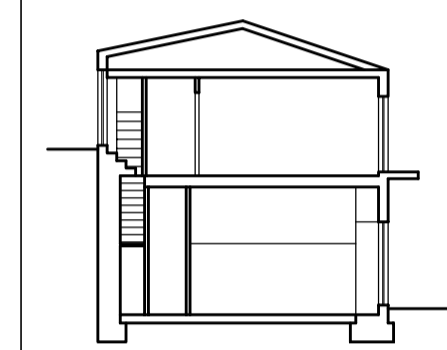
Contile su Via Raffaello

Prospetto su C.le via Raffaello

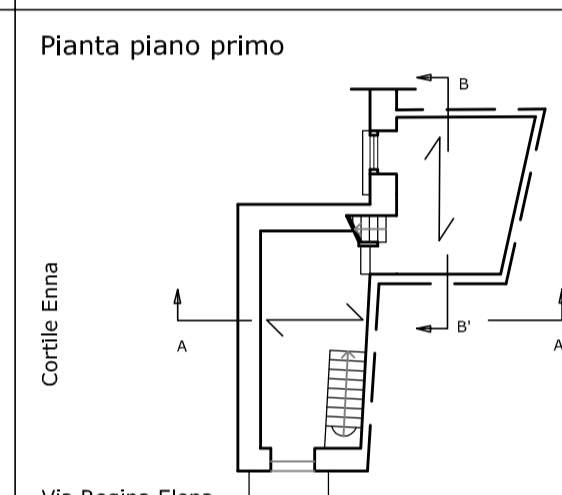
Prospetto su via Raffaello



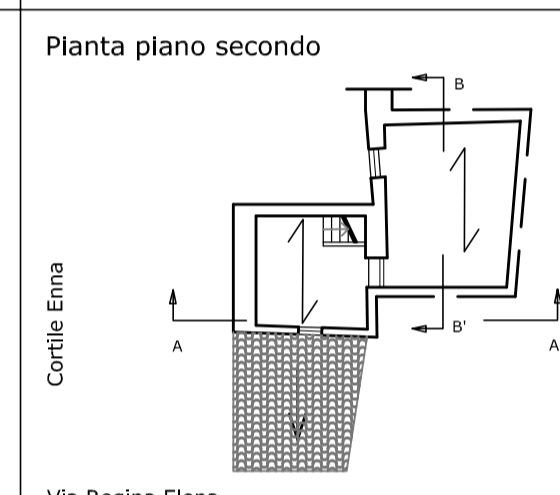
SEZ A-A'



Contile Enna



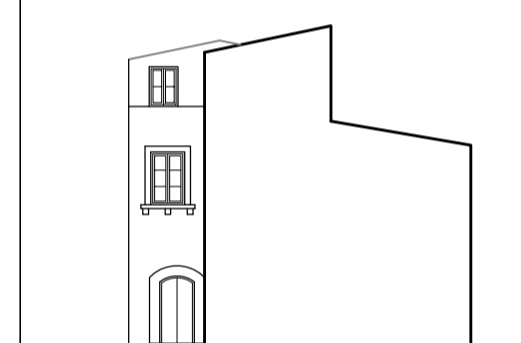
Contile Enna



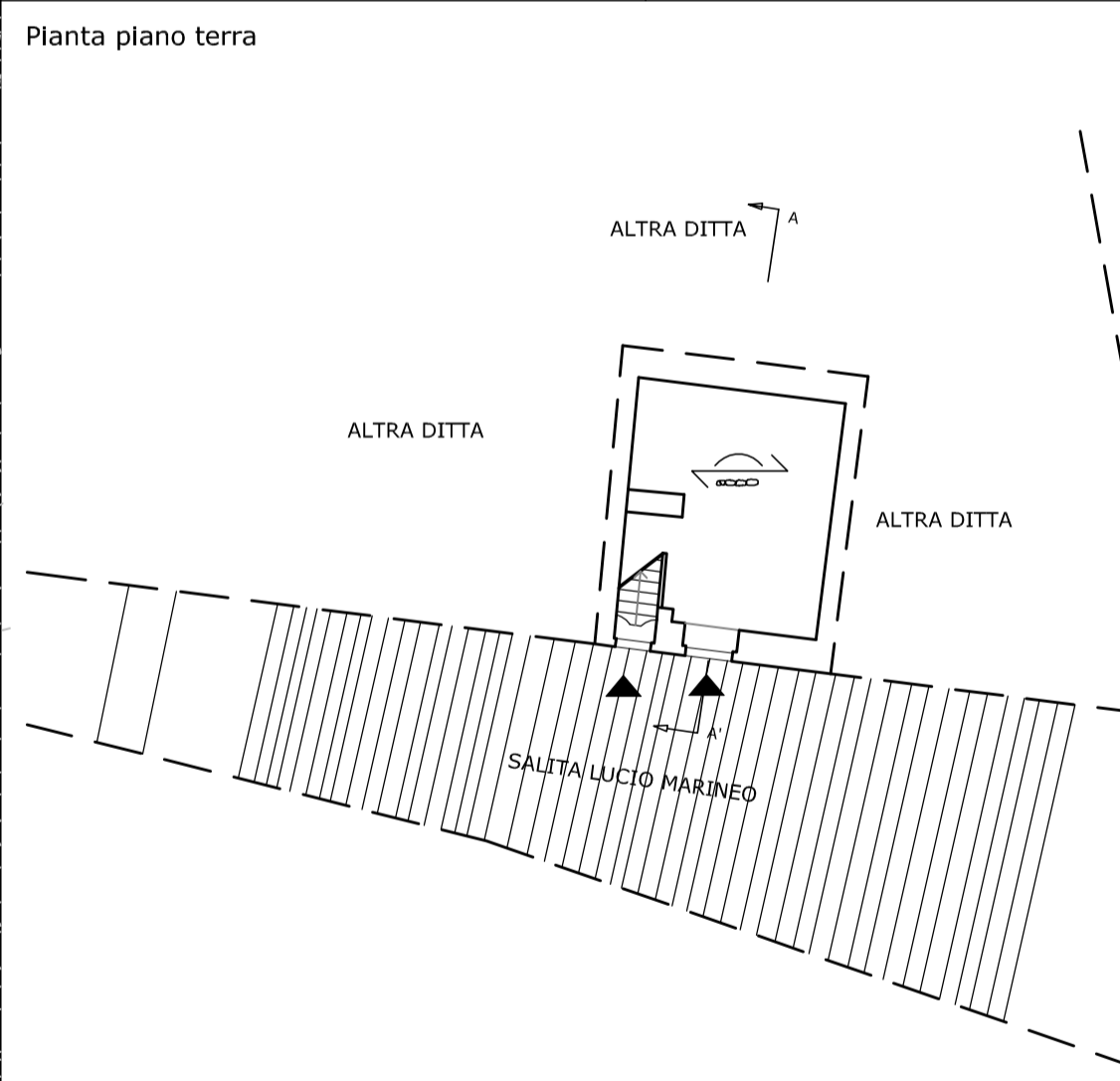
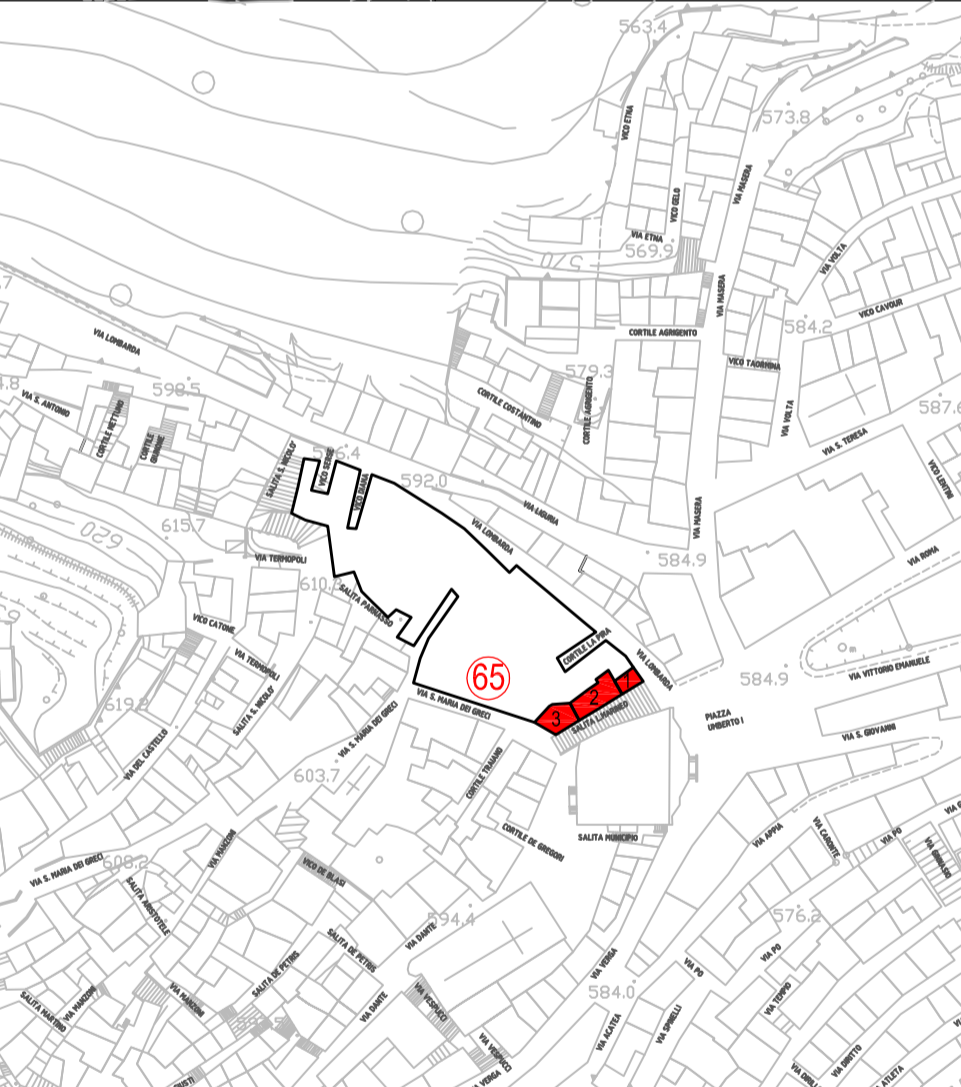
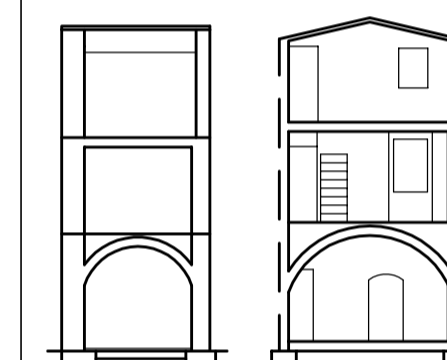
Contile Enna

Prospetto su cortile Enna

Prospetto su via Regina Elena



SEZ A-A'

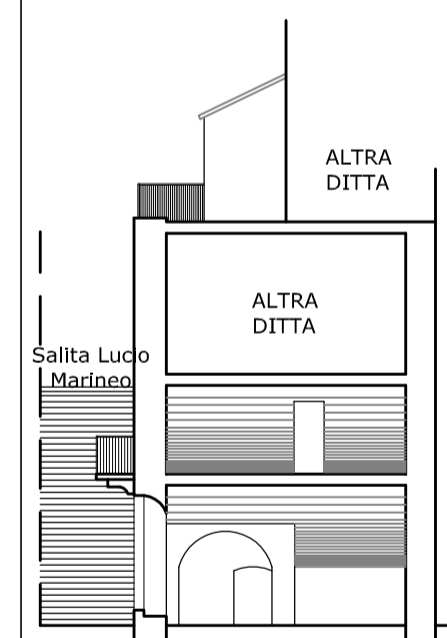


Planta piano terra



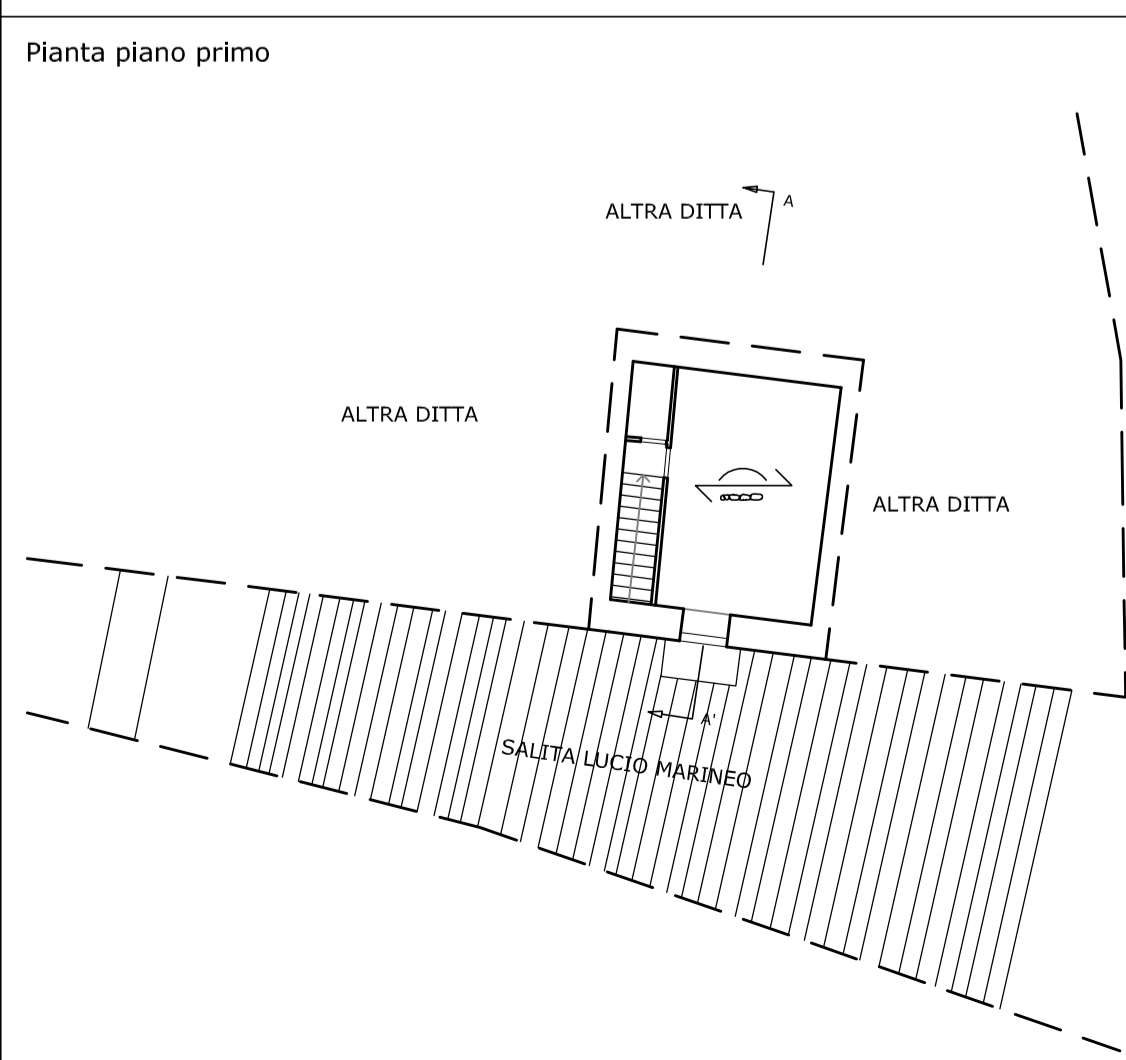
Prospetto su salita Lucio Marineo

SEZ A-A'



### Legenda

- numero isolato
- Unità edilizia



Planta piano primo

### Particolari scala 1:50

